



**BIG FOOT
SYSTEMS**

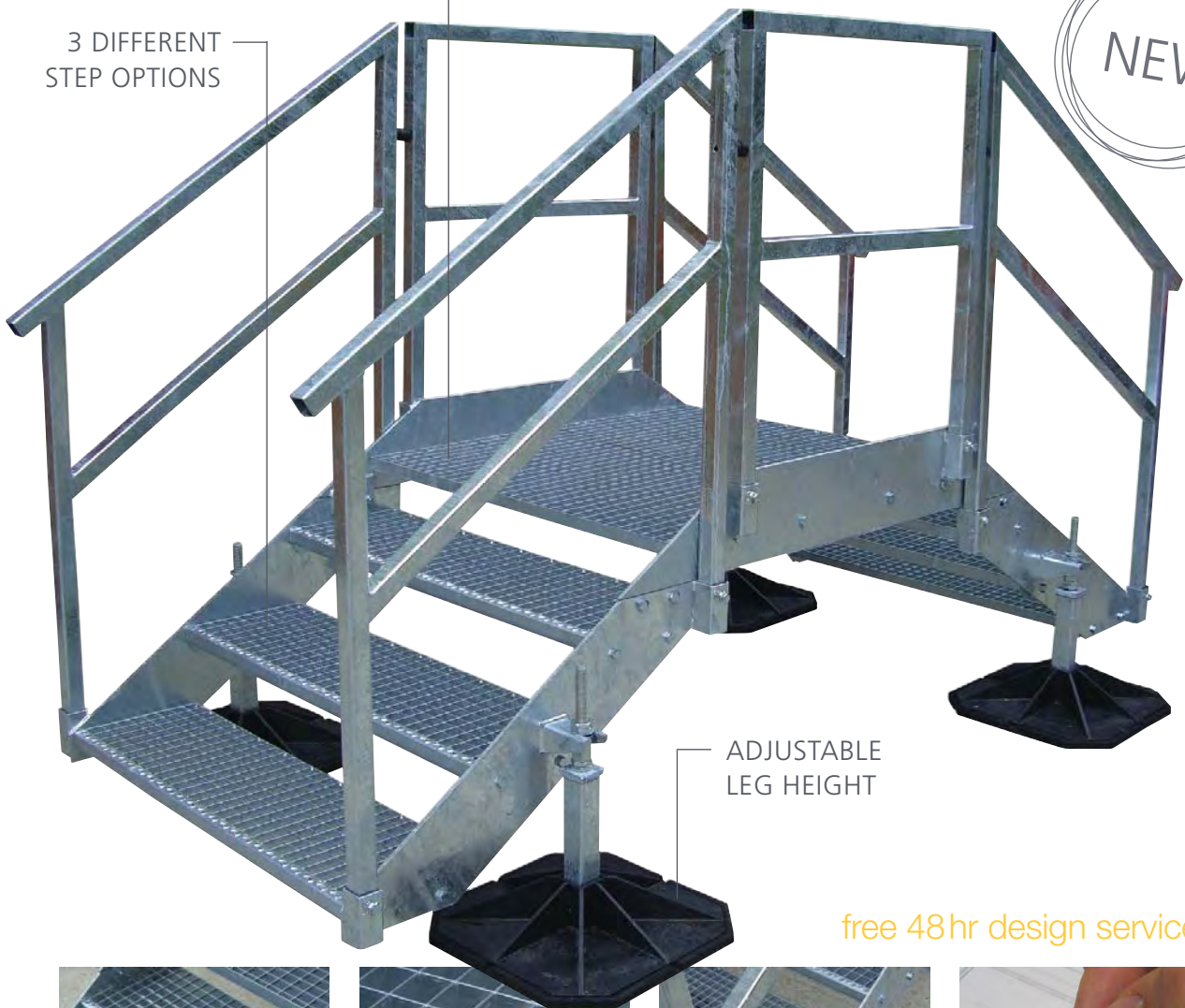
Step Overs

There are 3 basic modular Step Overs available with 3, 4 and 5 steps and a range of middle section lengths. The four legs on each Step Over are adjustable in height, with 450mm² feet (and AV mats) for stability.

VARIOUS LENGTH
MID-SECTIONS
AVAILABLE

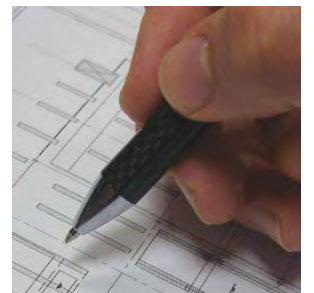
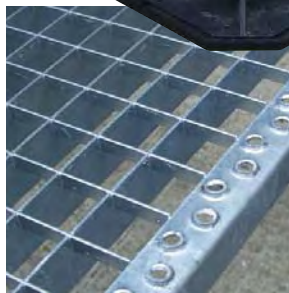
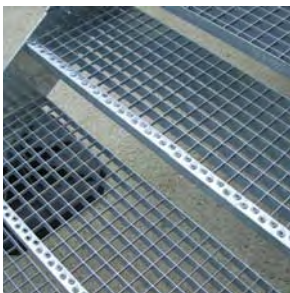
3 DIFFERENT
STEP OPTIONS

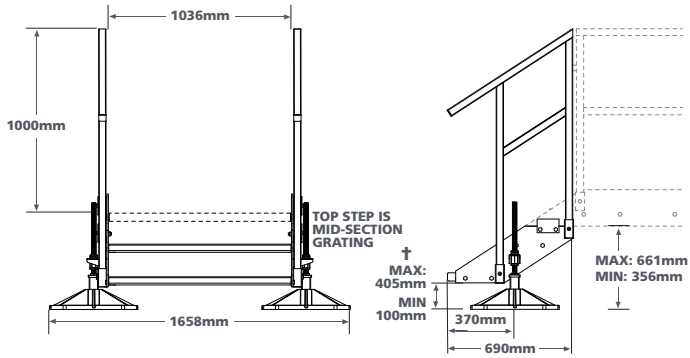
NEW



ADJUSTABLE
LEG HEIGHT

free 48hr design service ■

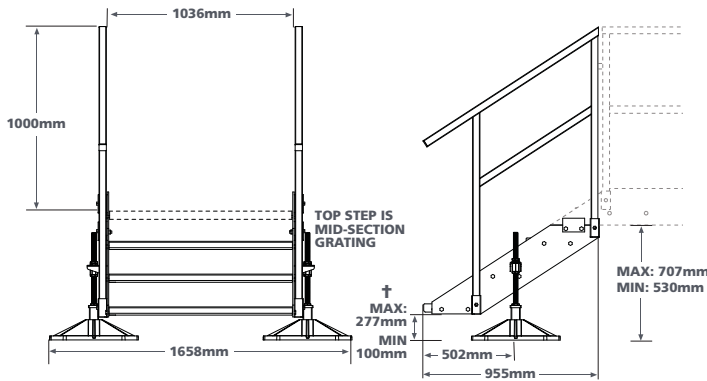




SYSTEM COMPONENTS

- 2 x 450mm² LEG ASSEMBLIES & AV MATS
- 2 x 3 STEP STAIR STRINGER ASSEMBLIES
- 2 x STEP GRATING
- 2 x 3 STEP HANDRAILS

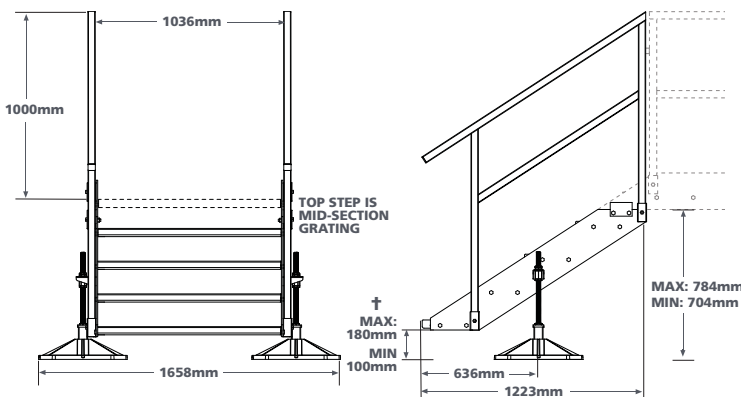
3 STEP-SECTION



SYSTEM COMPONENTS

- 2 x 450mm² LEG ASSEMBLIES & AV MATS
- 2 x 4 STEP STAIR STRINGER ASSEMBLIES
- 3 x STEP GRATING
- 2 x 4 STEP HANDRAILS

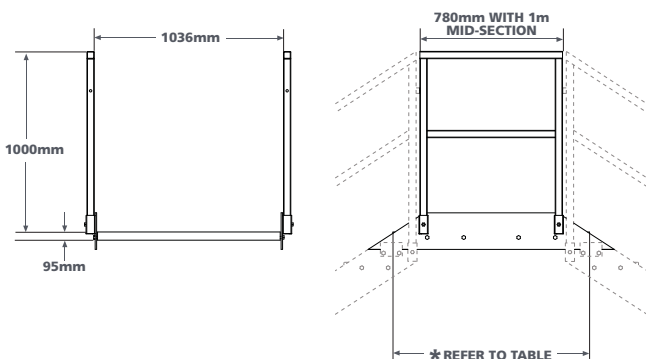
4 STEP-SECTION



SYSTEM COMPONENTS

- 2 x 450mm² LEG ASSEMBLIES & AV MATS
- 2 x 5 STEP STAIR STRINGER ASSEMBLIES
- 4 x STEP GRATING
- 2 x 5 STEP HANDRAILS

5 STEP-SECTION



SYSTEM COMPONENTS

- 1 x MID-SECTION ASSEMBLY
- 1 x MID-SECTION GRATING
- 2 x MID-SECTION HANDRAILS

MID-SECTION*

PART NUMBERS:

3 STEP	T.B.C.
4 STEP	T.B.C.
5 STEP	T.B.C.

***MID-SECTION LENGTHS:**

1.0m	T.B.C.
1.5m	T.B.C.
2.0m	T.B.C.
2.5m	T.B.C.
3.0m	T.B.C.

NOTE: Each Step-section must be fixed securely to a Mid-section.

† NOTE: Height of first step must be 100-180mm above landing platform.

■ we can also supply modular walkways